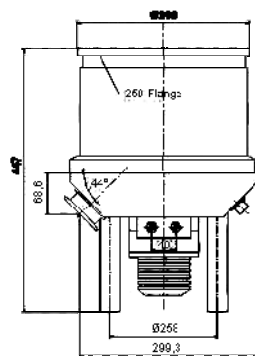
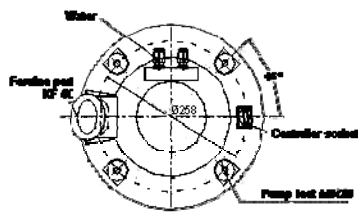
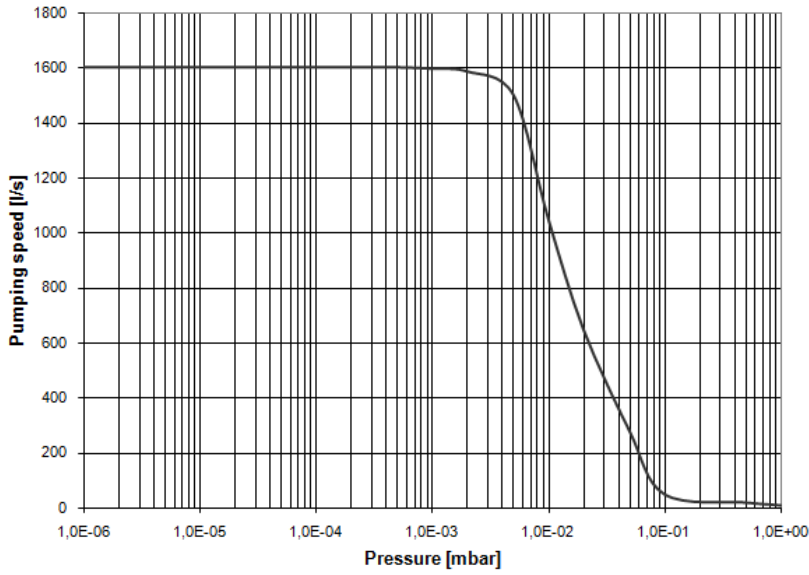


TYPE EVT-1600E



TYPE EVT-1600E

Technical Data		TYPE EVT-1600E
		1600E-LF
Pump type		Compound/Drag
Inlet Flange		250 ISO-K
Fore vacuum Flange		50 KF
Pumping speed (air)	l/s	1.600
Pressure for max. speed	mbar	1×10^{-2}
Rotation Speed	rpm	27.000
H ₂ Compression Ratio		5×10^3
N ₂ Compression Ratio		1×10^8
Ultimate Vacuum	mbar	9×10^{-9}
Run up Time	min	<7
Control Unit		FD-II 1600K
Input Voltage	VAC	220 ±10%
Cooling water	l/min	> 2
Bearing type		Ceramic Oil
Operating Orientation		Vertical (± 5°)
Weight	kg	47

Ordering Information	TYPE EVT-1600E
	1600E-LF
Turbo drag pump EVT-1600E incl. splinter screen	816.000
Control unit type FD-II 1600K	816.010
Cable 2,5 m	816.011
Cable 5 m	816.012
Cable 10 m	816.013
Cable 20 m	816.014
Other lengths	Upon request
Heating jacket 230V AC	Upon request
Venting valve NC 230V AC, 50/60Hz	250.533
Venting valve NC 24V AC, 50/60Hz	250.531
Venting valve NC 24V, DC	250.530
Filter for venting valves	215.152
Venting valve NO 200-230V, 50/60Hz	250.851
Venting valve NO 24V, DC	250.850
Delayed venting unit	Upon request
Aircooling unit R-XT, 90 - 264V AC, 50/60Hz	800.010
12V, DC	800.011
Recommended fore pump: Standard operation Type EVD-TRP-60, 400V AC	425.902
Purge gas operation Type EVD-TRP-90, 400V AC Also Dry pumps can be used	426.902