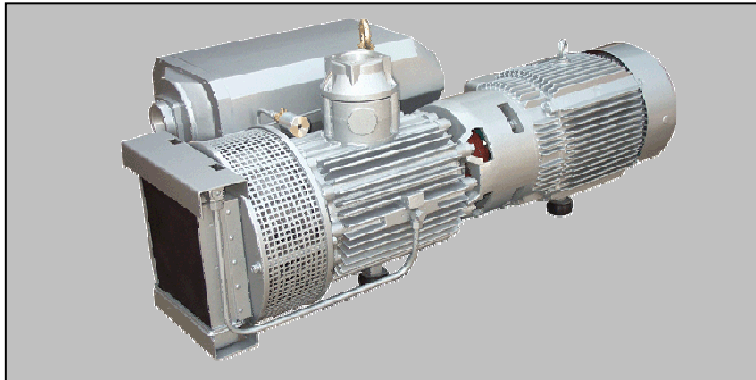
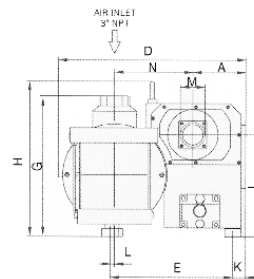
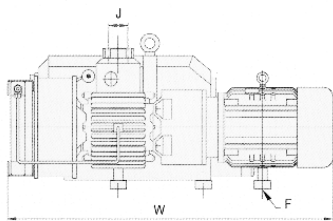
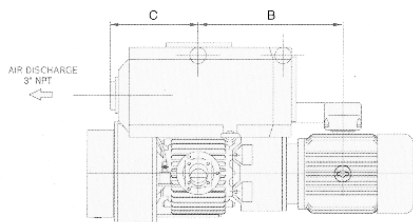
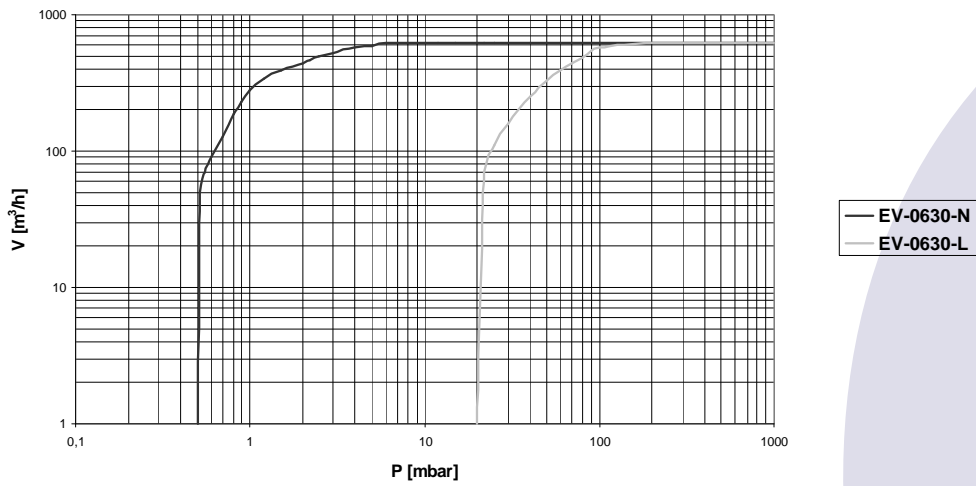


TYPE EV-0630



Pumping speed curve



| Dimensions | W | D | H | A | B | C | E | F | G | I | J | K | L | M | N |
|------------|------|-----|-----|-----|-----|-----|-----|----|-----|-----|-----|----|----|-----|-----|
| EV-00630 | 1720 | 880 | 710 | 237 | 770 | 400 | 570 | 12 | 660 | 478 | G3" | 65 | 20 | 275 | 378 |

TYPE EV-0630

| Technical Data | | | TYPE EV-0630 | |
|--------------------------|-------------------|----------|--------------|-------|
| | | | 50 Hz | 60 Hz |
| Nominal displacement | m ³ /h | 630 | 780 | |
| Ultimate pressure N type | mbar | 0,5 | 0,5 | |
| NM type | mbar | 2 | 2 | |
| L type | mbar | 20 | 20 | |
| Motor power | kW | 15,0 | 18,5 | |
| Nominal speed | rpm | 980 | 1160 | |
| Noise level | dB(A) | 77 | 79 | |
| Operating temperature | °C | 80 | 80 | |
| Oil capacity | ltr | 19,0 | 19,0 | |
| Weight | kg | 582 | 703 | |
| Admissible ambient temp. | °C | 10 to 40 | 10 to 40 | |
| Connection | Inlet | G(BSP) | 3" | |
| | Outlet | G(BSP) | 3" | |

| Ordering Information | | TYPE EV-0630 | |
|---|--|--------------|--------------------|
| | | 50 Hz | 60 Hz |
| N version (0,5 mbar) Three phase motor 400V, 50Hz (IEC) 400V, 60Hz (IEC) 400V, 60Hz (NEMA) | | 114.001 | 114.002 114.003 |
| NM version (2 mbar) Three phase motor 400V, 50Hz (IEC) 400V, 60Hz (IEC) 400V, 60Hz (NEMA) | | 114.101 | 114.102 114.103 |
| L version (20 mbar) Three phase motor 400V, 50Hz (IEC) 400V, 60Hz (IEC) 400V, 60Hz (NEMA) | | 114.201 | 114.202 114.203 |
| Other Voltages/Frequencies | | Upon request | |
| Filling with special oil | | Upon request | |
| Exhaust filter cartridge | | 120120 | |
| Gasket set | | 120490 | |
| Maintenance kit | | 120500 | |
| Pump module | | 120900 | |
| Inlet dust filter, paper cartridge | | 120800 | |