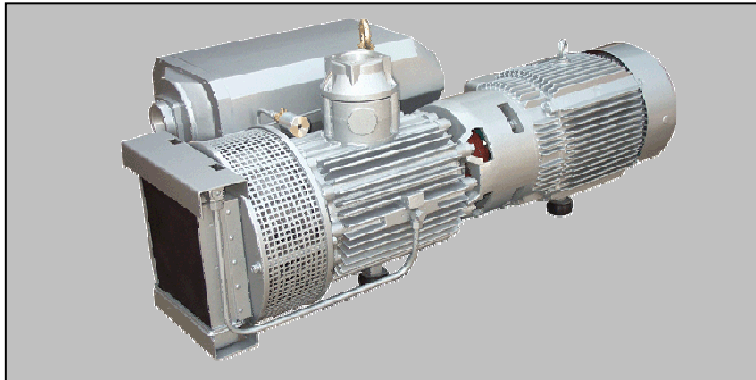
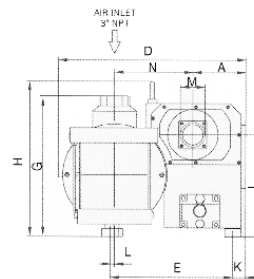
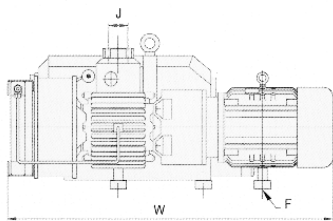
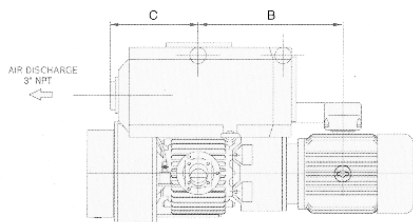
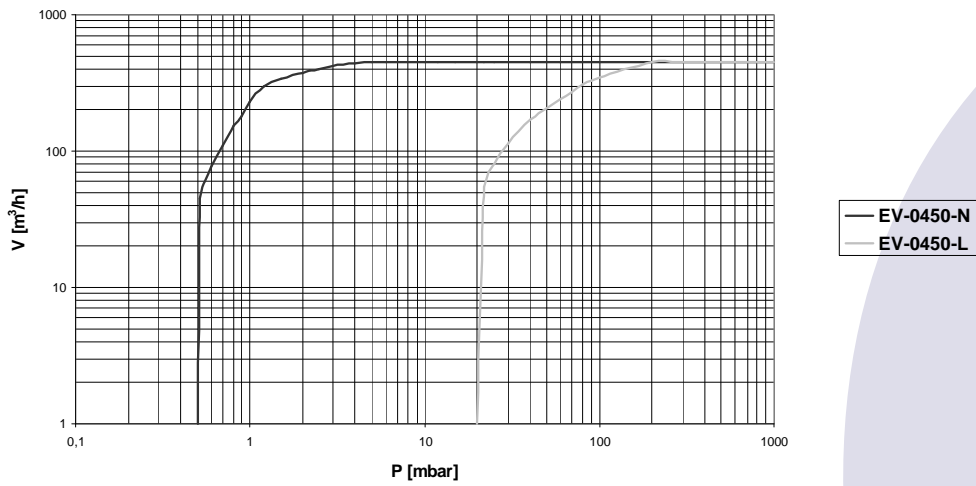


TYPE EV-0450



Pumping speed curve



Dimensions	W	D	H	A	B	C	E	F	G	I	J	K	L	M	N
EV-00450	1510	880	710	237	665	344	570	12	660	478	G3"	65	20	275	378

TYPE EV-0450

Technical Data		TYPE EV-0450	
		50 Hz	60 Hz
Nominal displacement	m ³ /h	448	560
Ultimate pressure N type	mbar	0,5	0,5
NM type	mbar	2	2
L type	mbar	20	20
Motor power	kW	11,0	11,0
Nominal speed	rpm	980	1160
Noise level	dB(A)	76	78
Operating temperature	°C	80	80
Oil capacity	ltr	19,0	19,0
Weight	kg	491	504
Admissible ambient temp.	°C	10 to 40	10 to 40
Connection Inlet	G(BSP)	3"	3"
Outlet	G(BSP)	3"	3"

Ordering Information	TYPE EV-0450	
	50 Hz	60 Hz
N version (0,5 mbar) Three phase motor 400V, 50Hz (IEC) 400V, 60Hz (IEC) 400V, 60Hz (NEMA)	113.001	113.002 113.003
NM version (2 mbar) Three phase motor 400V, 50Hz (IEC) 400V, 60Hz (IEC) 400V, 60Hz (NEMA)	113.101	113.102 113.103
L version (20 mbar) Three phase motor 400V, 50Hz (IEC) 400V, 60Hz (IEC) 400V, 60Hz (NEMA)	113.201	113.202 113.203
Other Voltages/Frequencies	Upon request	
Filling with special oil	Upon request	
Exhaust filter cartridge	120120	
Gasket set	120490	
Maintenance kit	080500	
Pump module	080900	
Inlet dust filter, paper cartridge	120800	