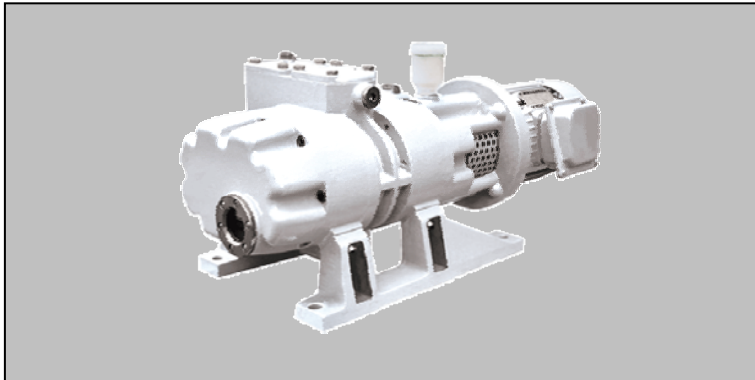
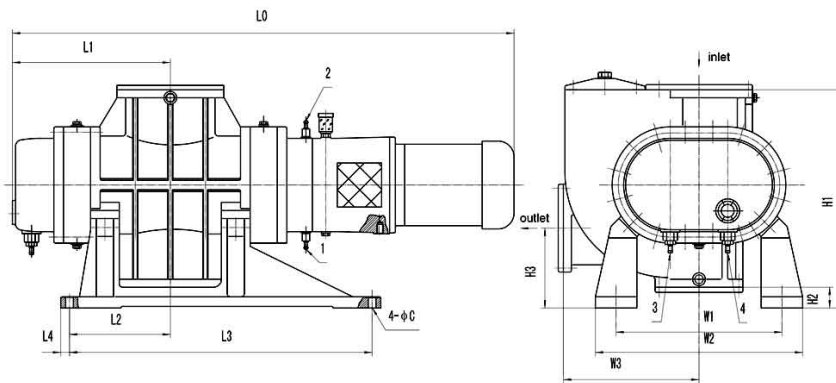
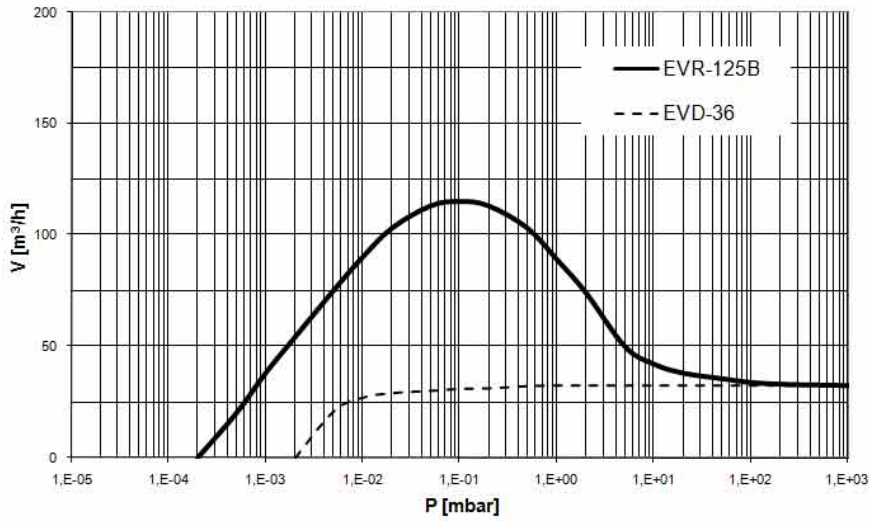


# TYPE EVR-125



**Pumping speed curve**



Dimensions	L0	L1	L2	L3	L4	H1	H2	H3	W1	W2	W3	4- $\phi$ C
EVR-125	660	175	120	360	15	270	40	100	220	270	145	4- $\phi$ 14

## TYPE EVR-125

Technical Data		TYPE EVR-125	
		50 Hz	60 Hz
Nominal pumping speed	m <sup>3</sup> /h	108	127
Ultimate total pressure <sup>1</sup>	mbar	3 · 10 <sup>-4</sup>	3 · 10 <sup>-4</sup>
ΔP of relieve valve	mbar	50	50
Motor power	kW	0,75	0,75
Nominal speed	rpm	2825	3400
Type of protection	IP	55	55
Oil filling for gearbox	ltr	0,8	0,8
Weight	kg	70	70
Noise level	dB	68	68
Connection	Inlet	DIN	63
	Outlet	DIN	63

Ordering Information	TYPE EVR-125	
	50 Hz	60 Hz
<b>EVR-125</b> 400V, 50/60Hz (IEC) 400V, 60Hz (NEMA)	660.001	660.001 660.003
<b>EVR-125B with bypass</b> 400V, 50/60Hz (IEC) 400V, 60Hz (NEMA)	660.011	660.011 660.013
<b>EVR-125M with magnetic drive</b> 400V, 50/60Hz (IEC) 400V, 60Hz (NEMA)	660.021	660.021 660.023
<b>EVR-125BM with bypass &amp; magnetic drive</b> 400V, 50/60Hz (IEC) 400V, 60Hz (NEMA)	660.031	660.031 660.033
Other Voltages/Frequencies	Upon request	
Filling of gearbox with special oil	Upon request	
Sealing set	660.901	
Maintenance kit	660.902	
Standard Oil filling 1 ltr	100.400	
Adapter set to ISO-K flanges		
Inlet DN 63 ISO-K	660.701	
Outlet DN 63 ISO-K	660.702	